



**ONE  
MONTH  
FREE RENT!**

**BLACK FRIDAY**

**Ascend**

Hunts Grove, Hardwick, Gloucester, GL2

**£1,895 Per Month**

FIRST MONTH RENT FREE - LIMITED TIME OFFER

Location, Travel & Local Community.

Hunts Grove is an ideal location for families, offering a fantastic range of local amenities just minutes away, including schools, supermarkets, parks, and a doctor's surgery. Excellent transport links, with easy access to the M5, providing close connections to both Bristol and Cheltenham. Public transport is readily available, with regular bus services and convenient rail links from Gloucester train station, ensuring hassle-free travel for commuters.

Education & Schools Nearby

The area provides excellent opportunities for children aged 4-18, with Gloucester University nearby for higher education. Hunts Grove Primary Academy is just a 7 minute walk from the development, making the school run quick and convenient.

About Your Home – The Chestnut

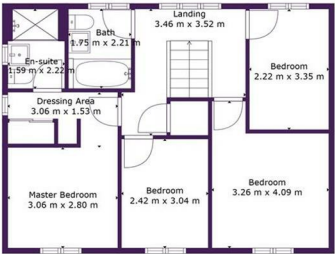
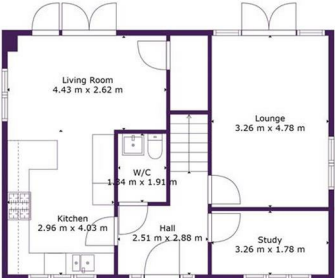
As you step into the heart of this home, you'll find a centrally located downstairs WC, offering convenience for all. The light-filled and spacious sitting room provides a relaxing haven for the entire family, while the downstairs home office offers ample workspace for various needs.

The open-plan kitchen/dining area, complete with integrated appliances, spans the width of the house, seamlessly connecting indoor and outdoor living through patio doors that lead to the rear garden.





28 Sabrina Close, Hardwick, Gloucester, GL2 4EZ



Ascend

**TOTAL: 116 m<sup>2</sup>**  
FLOOR 1: 57 m<sup>2</sup>, FLOOR 2: 59 m<sup>2</sup>  
EXCLUDED AREAS: LOW CEILING: 2 m<sup>2</sup>, GARAGE: 22 m<sup>2</sup>  
Measurements Are Calculated By Cubicasa Technology. Deemed Highly Reliable But Not Guaranteed.

